

**824-960 MHz H-POL or V-POL**

**Model:GL8/9-14**

**Electrical Data**

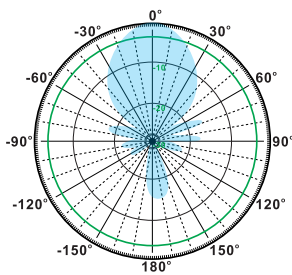
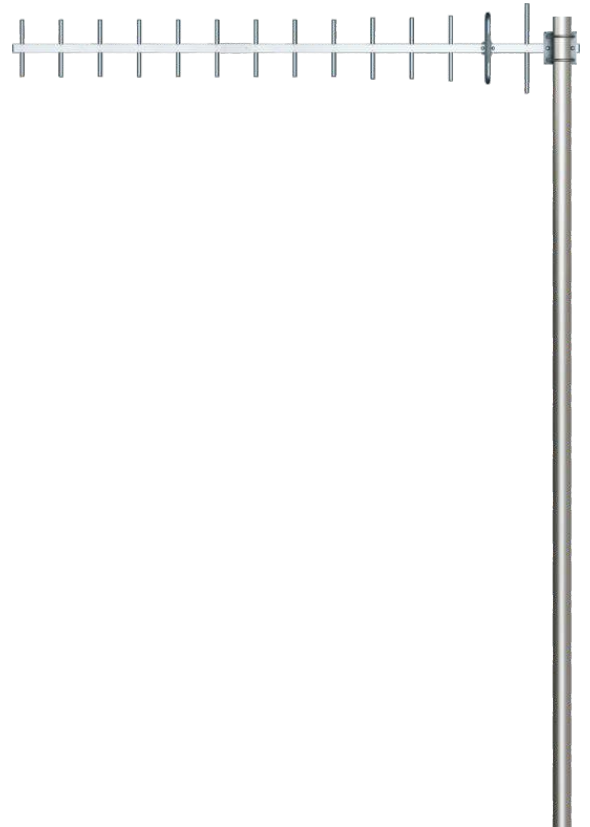
Frequency:	824-960 MHz
Gain:	14 dBi
VSWR:	<1.5:1
Polarization:	Horizontal Or Vertical
Horizontal Beamwidth :	34°
Vertical Beamwidth:	30°
Nominal Impedance:	50 Ohms
F/B Ratio:	>16 dB
Max Input Power:	100 W
Lightning Protection:	DC Ground

**Mechanical Data**

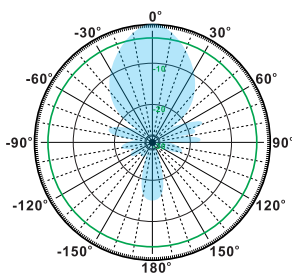
Connector :	N Female
Dimension:	1150mm/45.28in
Weight:	0.57kg/1.26lb
Cable Length:	360mm/14.17in
Reflector Material:	Aluminum Alloy
Antenna Material:	Mast
Mast Size:	Ø40-Ø50mm
Rated Wind Velocity:	210km/h
Operating temperature:	-40~+65°C

**Shipment Data**

Packing Qty:	10pcs/Carton
Carton Size:	1165*395*330mm
(length*width*height)	/45.87*15.55*12.99in
Packing Weight:	7.5kg/16.52lb



H-Plane



V-Plane

